



R.M. JONES Newsletter

FARMCENTRES

www.rmjones.com

July 2021

Hay: 01497 820410

Hereford: 01432 769527

Abergavenny: 01873 858300

Ledbury: 01531 806130

Weaning: Preparing for the start of the year

The dry April followed by one of the wettest and coldest May on record, resulted in a slow start to the grazing season. This coincided with peak milk production for the majority of ewes and as a result **body condition score (BCS)** may have suffered and be below target for this time of year.

The length of time taken for the ewe's ovary to mature means nutrition and **BCS** can influence ovulation as much as 6 months before mating. Unless management plans are put in place now for weaning and beyond, this year's spring grazing may affect next year's lambing percentage and profitability.

Rather than thinking of **weaning** as the end of the production cycle we should think of it as the start. Typically, lambs are **weaned** 8 to 10 weeks **pre-tupping** to allow ewes to recover and gain **BCS** if required. It is recommended that lowland and hill ewes are **BCS 3.5** and **2.5** respectively when going to the tup. This helps to support optimal ovulation rates and ensure pregnancy success. It is estimated that ewes require at least 6-8 weeks of good quality grazing (**>10.5 ME MJ/kg DM**) to gain **1 BCS**.

However, if ewes are required to increase the condition score by more than **1 BCS** where grazing is limited or poor quality then further time will be required and early weaning should be considered.

In addition, supplementation can support ewes and help balance energy, protein and minerals during this key time.

Optilix Energy is a low moisture, extra high energy and protein feed and mineral lick.

- Extra energy is ideal for supporting optimal body condition
- The **high sugar** formulation provides more fermentable energy to further support performance and overall feed intake
- **High protein (12%)**, including natural and urea sources supports grass and forage utilization
- The addition of key minerals, vitamins and trace elements, including protected **selenium** and **zinc** supports ewe overall **health, performance** and **fertility**.

Make weaning count this year to boost next year's bottom line

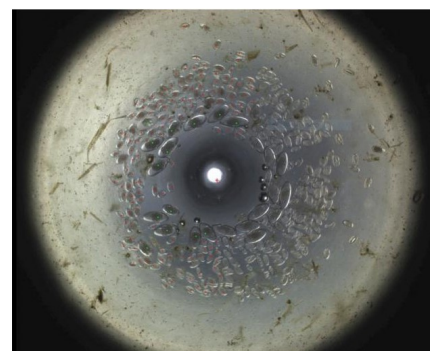
Fecpak Faecal Egg Counting

Save time and money by not worming unnecessarily.

Use the right product at the right time and resist resistance!

Call us for more details

Sheep, Cattle and Horses



Avoid the Weaning Check and Boost Growth

A trial done by Glasgow Vet school showed **Downland Essential Lamb bolus** :

- Increased **daily live weight gain** by **38%** compared to non-bolused Lambs
- **Vitamin B12** levels increased by 300%
- Serum Glutathione (an indicator of **Selenium**) by 100%
- Releases **Cobalt, Selenium** and **Iodine** for 120 days
- Great value at **0.5 pence per day!**



Arable Update – July 2021

UK LIFFE wheat Nov21 @ £170 - 183/t

MATIF OSR Nov21 @ £410 - 418/t

Current wheat growth stage GS73-77 Milk Development

Current OSR growth stage GS75-80 Pod Filling and early Ripening

Overview of 2021

For cereal crops the season is almost ended. On the whole crops look OK to good. There are a number of thinner crops than usual out there due mainly to the season (wet winter, cold and dry early spring, and a very wet May). The wet May in particular kicked off a lot of late weed growth and the drier spells produced more **Yellow Rust** than we are used to.

What have learned from this cropping year? I think the key things have been to;

1. Grow the right varieties – look at disease scores rather than yield
2. Ensuring crops establish well in the autumn so they hit a decent spring population
3. Early spring nutrition to ensure that the target plant populations are maintained
4. Autumn weed control especially in Winter Barley and Oats to keep grassweeds out.

Key tasks this month

- **Rape desiccation** – **ISKAY** is now the industry standard “pod sticker”. Apply along with Glyphosate when 2/3rds of the seed in the pods halfway down the main raceme (stem) are turning brown. Harvest interval is 2 weeks. **Iskay** can be applied as a separate pass earlier when pods are green to reduce seed loss at desiccation.
- **Crop trials** – if you haven’t been able to visit any trial plots to look at varieties for next year please give us a call as we have access to trial sites locally.
- **Order up your autumn seed** – Barley and Oats in particular need to be ordered early to ensure they are on farm
- **Beet fungicides need to start** going on later in July. Most crops, even the late drilled ones, should fill the rows at the end of the month. Ideally Magnesium and Boron trace elements will be applied at the same time to maximise leaf retention and photosynthetic capacity into the autumn.

Providing sound, technical advice

