



Business / Farm Name _____
Address _____
Postcode _____

Approved Operator's Name _____
Start Date _____
COSHH Risk Assessment Done ☐ Site / Farm Plan ☐
MSDS Sheets Available ☐ Rodent Monitoring Plan ☐

BAIT POINT			LOCATION		FORMULATION / GRAMS USED	
1						
2						
3						
4						
5						
6						
7						
8						
9						
10						
11	EXAMPLE	Egg Picking 200g	Wheatcorn grain	0.005	200g	AT
KEY:	NT = No Take PT = Part Take L = Lost					AT
						3 Rats Disposed
						AT
						5 Rats Disposed
						PT
						150g
						3 Rats Disposed
						50g
						1 Rat Disposed
						None
						NT
						None

IMPORTANT: Keep a separate 'Rodent Monitoring Log' before and after treatments. Detail actions required.

Date Treatment Finished _____
Date Bait Removed _____
Signed _____

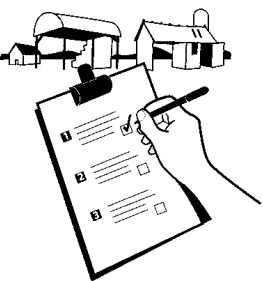
SITE / FARM PLAN - BAIT POINT LOCATIONS - PROOFING & HYGIENE ISSUES

Grid area for drawing site/farm plan and indicating bait points, proofing, and hygiene issues.

Draw diagram of site / farm and indicate each bait point. Note signs of activity including proofing / hygiene issues.
Notes: _____

Site / Farm Name: _____
Date of Plan: _____
Approved Operators Name: _____

Downland supporting
Campaign for Responsible Rodenticide Use



Always have a planned approach

- Before treatment begins, a thorough survey of the infested site is an essential key to success when using any rodenticide.
- Environmental changes which could be made to reduce the attractiveness of the site to rodents should be noted for implementing after the treatment. Usually this will involve rodent proofing and removing rubbish and weeds that provide harbourages and cover. However, the site should not be cleared before treatment since this will disturb the rodent population and make bait acceptance more difficult to achieve.
- Obvious food, such as spilled grain, should be removed as far as possible and any food sources covered.
- Rodenticide baits should only be used for as long as is necessary to achieve satisfactory control.
- In most cases, any anticoagulant bait should have achieved control within 35 days. Should activity continue beyond this time, the likely cause should be determined and documented. If bait continues to be consumed without effect, a more potent anticoagulant should be considered. If bait take is poor, relative to the apparent size of the infestation, consideration should be given to re-siting the bait points and possibly changing to another bait base, as well as making other environment changes.

Always record quantity of bait used and where it's placed

- A simple site plan or location list identifying areas of particular concern pertinent to the site should be drawn up and retained.
- A record of all bait points and the amount of bait laid should be maintained during the treatment. Activity should be noted at each bait point, including any missing or disturbed baits, as the treatment progresses.
- By carefully recording the sites of all bait points responsible users of rodenticides are able to return to these sites at the end of the treatment and remove uneaten bait so that it does not become available to wildlife.

Always use enough baiting points

- Users should follow the label instructions regarding the size and frequency of bait points and the advice given regarding the frequency and number of visits to the site.
- By using enough bait points the rodent control treatment will be conducted most efficiently and in the shortest possible time. This will restrict the duration of exposure of non-target animals to a minimum.

Always collect and dispose of rodent bodies

- The bodies of dead rodents may carry residues of rodenticides and, if eaten by predators or scavengers, may be a source of wildlife exposure to rodenticides.
- It is essential to carry out regular searches for rodent bodies, both during and after the treatment period. Bodies may be found for several days after rats have eaten the bait and rats may die up to 100 metres or more away from the baited site.
- Any rodent bodies should be removed from the site and disposed of safely using the methods recommended on the label.

Never leave bait exposed to non-target animals and birds

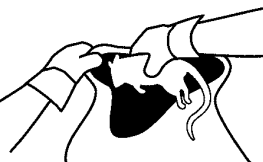
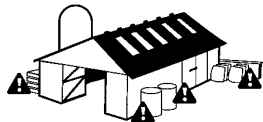
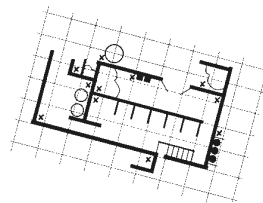
- Care should be taken to ensure that bait is sufficiently protected to avoid accidentally poisoning other mammals and birds. Natural materials should be used where possible.
- Bait stations should be appropriate to the prevailing circumstances. They should provide access to the bait by rodents, while reducing the risks of non-target access and interference by unauthorised persons. They should protect the bait from contamination by dust or rain. Their design, construction and placement should be such that interference is minimised.

Never fail to inspect bait regularly

- Where the risk assessment or treatment records show that multiple visits are required, then those should be made as frequently as is considered necessary. Daily inspection may be required in some circumstances.
- At each visit, baits should be replenished according to the product label and a thorough search made to ensure that bodies and any spilled bait are removed and disposed of safely. Records of such visits should be maintained.

Never leave bait down at the end of the treatment

- Bait left out at the end of a treatment is a potential source of contamination of wildlife.
- On completion of the treatment, records should be updated to signify that the infestation is controlled and that, as far as reasonably practical, all steps have been taken to ensure that the site is now free of rodenticide bait.



Product Description & Advice	IMPORTANT: Always read & follow the label before using rodenticides			Product Code	Flavouring / Attractant	Type of Bait	LD50 - Lethal Dose of bait for	LD50 - Lethal Dose of bait for	Proof of Competence Required	Permanent Baiting	Indoors Outdoors Around Buildings	Open Area baiting	Burrow Baiting	Waste Dumps	Sewer Baiting	Pulsed Baiting
RATTA + Difenacoum Range							200g Rat - Days to kill after LD50	20g Mouse - Days to kill after LD50	Follow CRRU Guidelines	Follow CRRU Guidelines	Rats and Mice	Rats	Rats	Rats	Rats	Rats
RATTA + Difenagrain 3Kg Loose Grain - Use in tamper proof bait station where possible.	R6161	Aniseed	Multi-Feed Bait	7-10g - 5-7 days	0.32g - 1-3 days	YES	YES	YES	YES	YES	YES	YES	YES	YES	NO	NO
RATTA + Difenagrain 5Kg Loose Grain - Use in tamper proof bait station where possible.	R6162	Aniseed	Multi-Feed Bait	7-10g - 5-7 days	0.32g - 1-3 days	YES	YES	YES	YES	YES	YES	YES	YES	YES	NO	NO
RATTA + Difenagrain 10Kg Loose Grain - Use in tamper proof bait station where possible.	R6163	Aniseed	Multi-Feed Bait	7-10g - 5-7 days	0.32g - 1-3 days	YES	YES	YES	YES	YES	YES	YES	YES	YES	NO	NO
RATTA + Difenagrain 20Kg Box (2x10kg) Loose Grain - Use in tamper proof bait station where possible.	R6166BOX	Aniseed	Multi-Feed Bait	7-10g - 5-7 days	0.32g - 1-3 days	YES	YES	YES	YES	YES	YES	YES	YES	YES	NO	NO
RATTA + Difenagrain 5Kg Sachets - Do not open sachets as keeps bait fresh. Rodents will know packaging.	R6164	Aniseed	Multi-Feed Bait	7-10g - 5-7 days	0.32g - 1-3 days	YES	YES	YES	YES	YES	YES	YES	YES	YES	NO	NO
RATTA + Difenagrain 10Kg Sachets - Do not open sachets as keeps bait fresh. Rodents will know packaging.	R6165	Aniseed	Multi-Feed Bait	7-10g - 5-7 days	0.32g - 1-3 days	YES	YES	YES	YES	YES	YES	YES	YES	YES	NO	NO
RATTA + Difenapaste 5Kg Paste Sachets - Secure on bait station rods or nail on to pieces of wood & place inside station.	RDP-5 RATTA	Peanut Oils	Multi-Feed Bait	7-10g - 5-7 days	0.32g - 1-3 days	YES	YES	YES	YES	YES	YES	YES	YES	YES	NO	NO
RATTA + Difenablock 3Kg Blocks - Secure on bait station rods or nail on to pieces of wood & place inside station.	RN3241 RATTA	Plain Extruded	Multi-Feed Bait	7-10g - 5-7 days	0.32g - 1-3 days	YES	YES	YES	YES	YES	YES	YES	YES	YES	YES	NO
RATTA + Difenablock 5Kg Blocks - Secure on bait station rods or nail on to pieces of wood & place inside station.	RN3242 RATTA	Plain Extruded	Multi-Feed Bait	7-10g - 5-7 days	0.32g - 1-3 days	YES	YES	YES	YES	YES	YES	YES	YES	YES	YES	NO
RATTA + Difenablock 10Kg Blocks - Secure on bait station rods or nail on to pieces of wood & place inside station.	RN3243RATTA	Plain Extruded	Multi-Feed Bait	7-10g - 5-7 days	0.32g - 1-3 days	YES	YES	YES	YES	YES	YES	YES	YES	YES	YES	NO
RATTA + Bromadiolone Range																
RATTA + Bromagrain 3Kg Loose Grain - Use in tamper proof bait station where possible.	R6171	Plain	Multi-Feed Bait	5g - 4-6 days	0.7g - 2-4 days	YES	YES	YES	YES	YES	YES	YES	YES	YES	NO	NO
RATTA + Bromagrain 5Kg Loose Grain - Use in tamper proof bait station where possible.	R6172	Plain	Multi-Feed Bait	5g - 4-6 days	0.7g - 2-4 days	YES	YES	YES	YES	YES	YES	YES	YES	YES	NO	NO
RATTA + Bromagrain 10Kg Loose Grain - Use in tamper proof bait station where possible.	R6173	Plain	Multi-Feed Bait	5g - 4-6 days	0.7g - 2-4 days	YES	YES	YES	YES	YES	YES	YES	YES	YES	NO	NO
RATTA + Bromagrain 20Kg Box (2x10Kg) Loose Grain - Use in tamper proof bait station where possible.	R6174BOX	Plain	Multi-Feed Bait	5g - 4-6 days	0.7g - 2-4 days	YES	YES	YES	YES	YES	YES	YES	YES	YES	NO	NO
RATTA + Bromagrain 5Kg Grain Sachets - Do not open sachets as keeps bait fresh. Rodents will know packaging.	R6175	Plain	Multi-Feed Bait	5g - 4-6 days	0.7g - 2-4 days	YES	YES	YES	YES	YES	YES	YES	YES	YES	NO	NO
RATTA + Bromagrain 10Kg Grain Sachets - Do not open sachets as keeps bait fresh. Rodents will know packaging.	R6176	Plain	Multi-Feed Bait	5g - 4-6 days	0.7g - 2-4 days	YES	YES	YES	YES	YES	YES	YES	YES	YES	NO	NO
RATTA + Bromablock 3Kg Blocks - Secure on bait station rods or nail on to pieces of wood & place inside station.	R6178	Plain Extruded	Multi-Feed Bait	5g - 4-6 days	0.7g - 2-4 days	YES	YES	YES	YES	YES	YES	YES	YES	YES	YES	NO
RATTA + Bromablock 5Kg Blocks - Secure on bait station rods or nail on to pieces of wood & place inside station.	R6179	Plain Extruded	Multi-Feed Bait	5g - 4-6 days	0.7g - 2-4 days	YES	YES	YES	YES	YES	YES	YES	YES	YES	YES	NO
RATTA + Bromablock 10Kg Blocks - Secure on bait station rods or nail on to pieces of wood & place inside station.	R6180	Plain Extruded	Multi-Feed Bait	5g - 4-6 days	0.7g - 2-4 days	YES	YES	YES	YES	YES	YES	YES	YES	YES	YES	NO
RATTA EXTRA Brodifacoum Range - UK's Fastest Rat and Mouse Killer																
RATTA EXTRA Paste 3Kg 0.004% - Secure on bait station rods or nail on to pieces of wood & place inside station.	R6182	Peanut Oils	Single Feed Bait	2-3g - 2-3 days	0.2g 1-2 days	YES	NO	YES	NO	YES	NO	YES	NO	NO	NO	YES
RATTA EXTRA Paste 5Kg 0.004% - Secure on bait station rods or nail on to pieces of wood & place inside station.	R6183	Peanut Oils	Single Feed Bait	2-3g - 2-3 days	0.2g 1-2 days	YES	NO	YES	NO	YES	NO	YES	NO	NO	NO	YES
RATTA EXTRA 3kg Loose Mixed Grain Bait 0.005% - Whole and cut wheat mix. Ideal for both Rats & Mice. Use in tamper proof bait station where possible.	R6184	Apple	Single Feed Bait	2-3g - 2-3 days	0.2g 1-2 days	YES	NO	YES	NO	YES	NO	YES	NO	NO	NO	YES
RATTA EXTRA 5kg Loose Mixed Grain Bait 0.005% - Whole and cut wheat mix. Ideal for both Rats & Mice. Use in tamper proof bait station where possible.	R617185	Apple	Single Feed Bait	2-3g - 2-3 days	0.2g 1-2 days	YES	NO	YES	NO	YES	NO	YES	NO	NO	NO	YES
RATTA EXTRA 20Kg Box (2x10Kg) Loose Mixed Grain Bait 0.005% - Whole and cut wheat mix. Ideal for both Rats & Mice. Use in tamper proof bait station where possible.	R617187BOX	Apple	Single Feed Bait	2-3g - 2-3 days	0.2g 1-2 days	YES	NO	YES	NO	YES	NO	YES	NO	NO	NO	YES
HARMONIX RODENT PASTE																
Harmonix Rodent Paste 5 Kg - Min Order 2 Per outer	HARMXP5KG	Peanut oils	Paste Sachet	14g - 2-5 days	1.5-25g - 2-5 days	YES	YES	YES	YES	YES	YES	YES	YES	YES	NO	NO
UV Monitoring Baits - Control should be achieved in most instances with Anticoagulant Baits in 35 days. Use UV baits to monitor for further activity. Part of CRRU Best Practice 35 Day Baiting Rule																
UV Blocks - Can track droppings and urine with UV torch to show rodent runs.	LB4	Plain Extruded - UV Tracker	Non Toxic	N/A	N/A	All Users - Non CRRU	YES	YES	YES	YES	YES	YES	YES	YES	YES	NO
UV Paste - Can track droppings and urine with UV torch to show rodent runs.	LP4	Peanut Oils - UV Tracker	Non Toxic	N/A	N/A	All Users - Non CRRU	YES	YES	YES	YES	YES	YES	YES	YES	NO	NO

Useful links:

Visit www.thinkwildlife.org/downloads/ for information on: Permanent Baiting | Code of Best Practice | Burrow Baiting | Rat Control and Game Management | Environmental Risk Assessment